

Kansas City Terminal Railway Track Diagram



KANSAS CITY TERMINAL RAILWAY



BNSF Engineering Department



The material contained in this document is not to scale and should only be used as reference. It does not supersede any rules or regulations currently in effect.

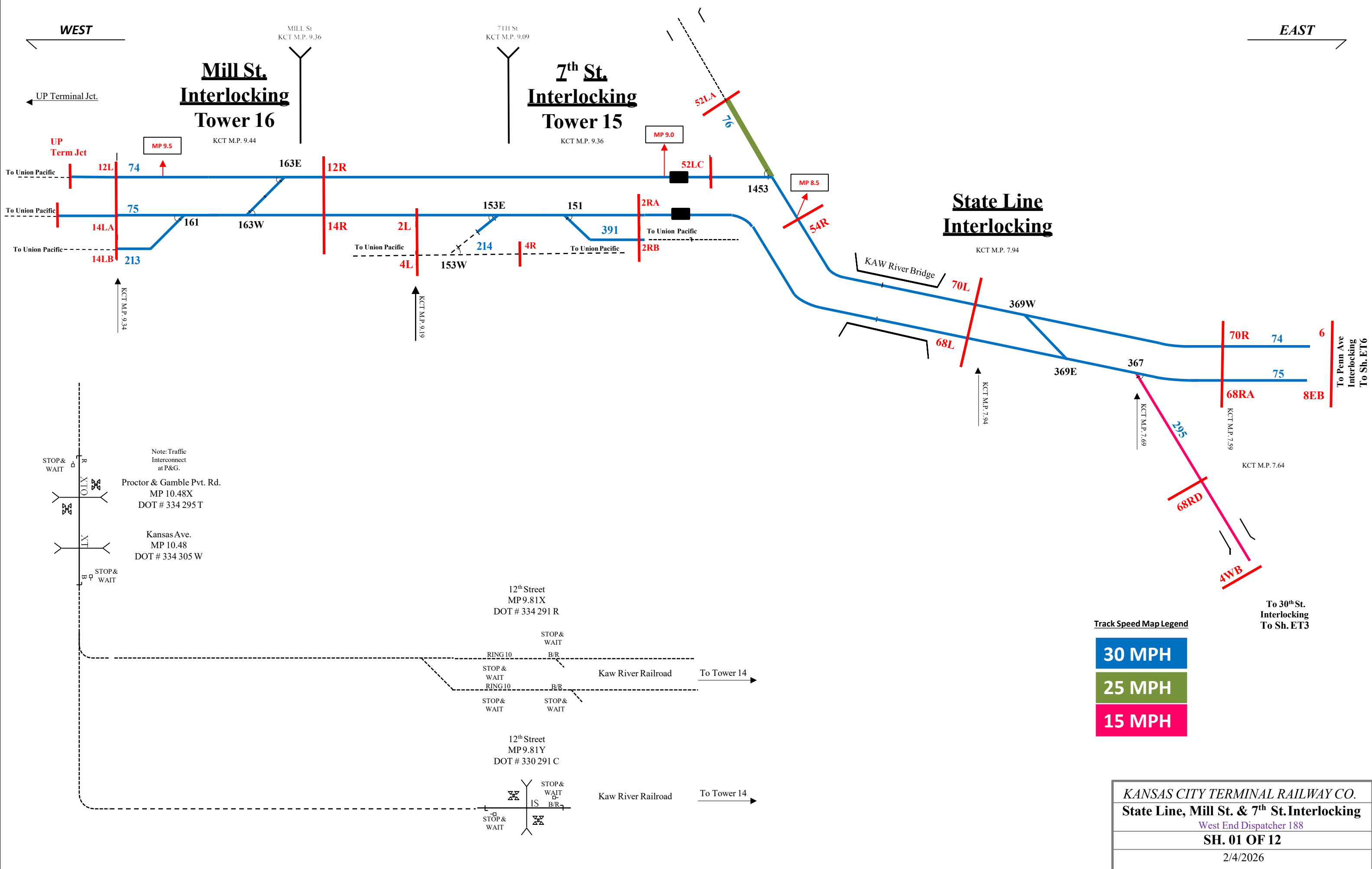
WEST

EAST

Mill St. Interlocking Tower 16

7th St. Interlocking Tower 15

State Line Interlocking



Note: Traffic Interconnect at P&G.

Proctor & Gamble Pvt. Rd.
MP 10.48X
DOT # 334 295 T

Kansas Ave.
MP 10.48
DOT # 334 305 W

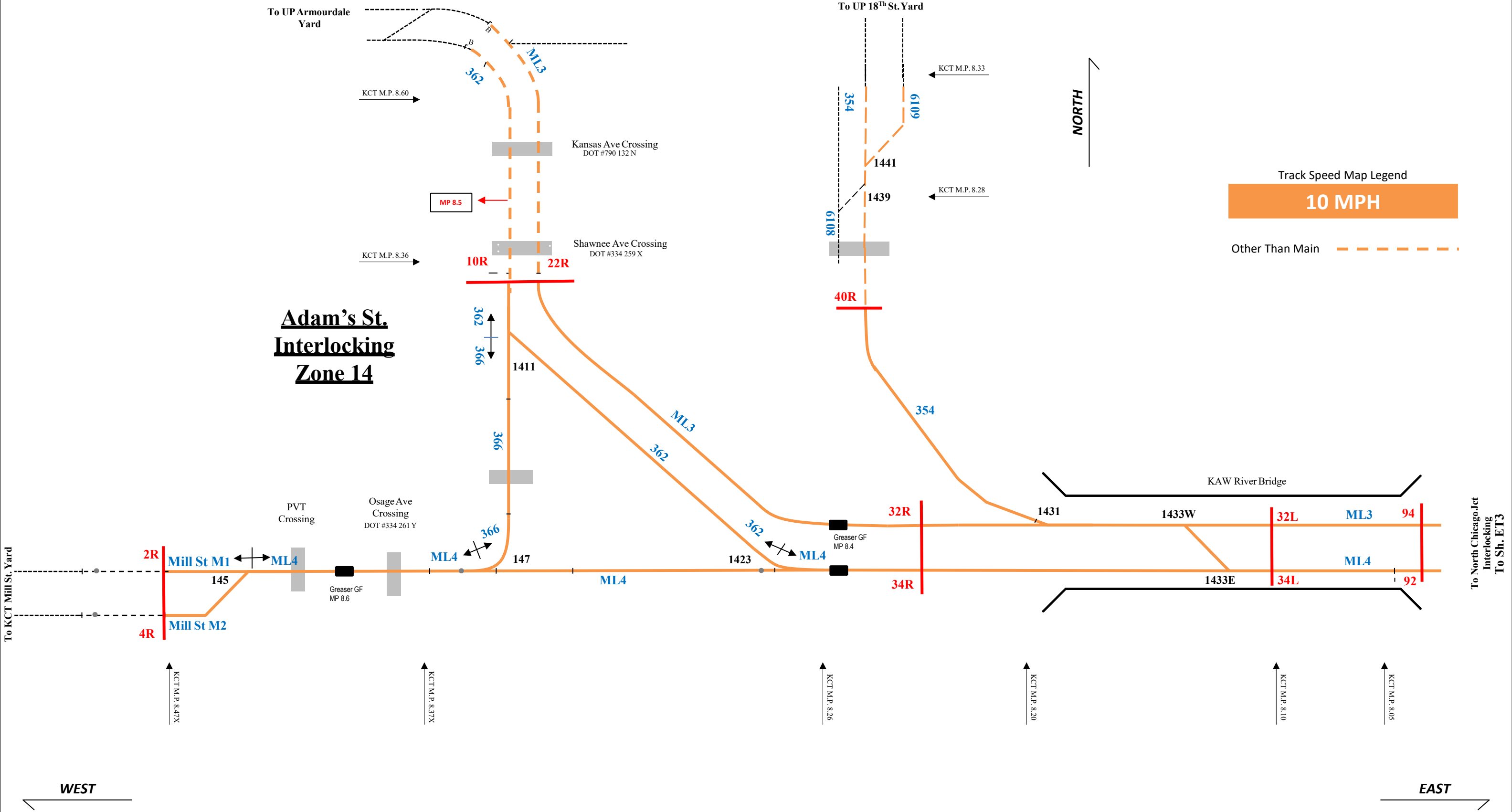
12th Street
MP 9.81X
DOT # 334 291 R

12th Street
MP 9.81Y
DOT # 330 291 C

Track Speed Map Legend

- 30 MPH
- 25 MPH
- 15 MPH

Adam's St. Interlocking Zone 14



Track Speed Map Legend

10 MPH

Other Than Main - - - - -

South

North

Old Union Depot Interlocking Tower 2

(Cont.)

MOW Yard

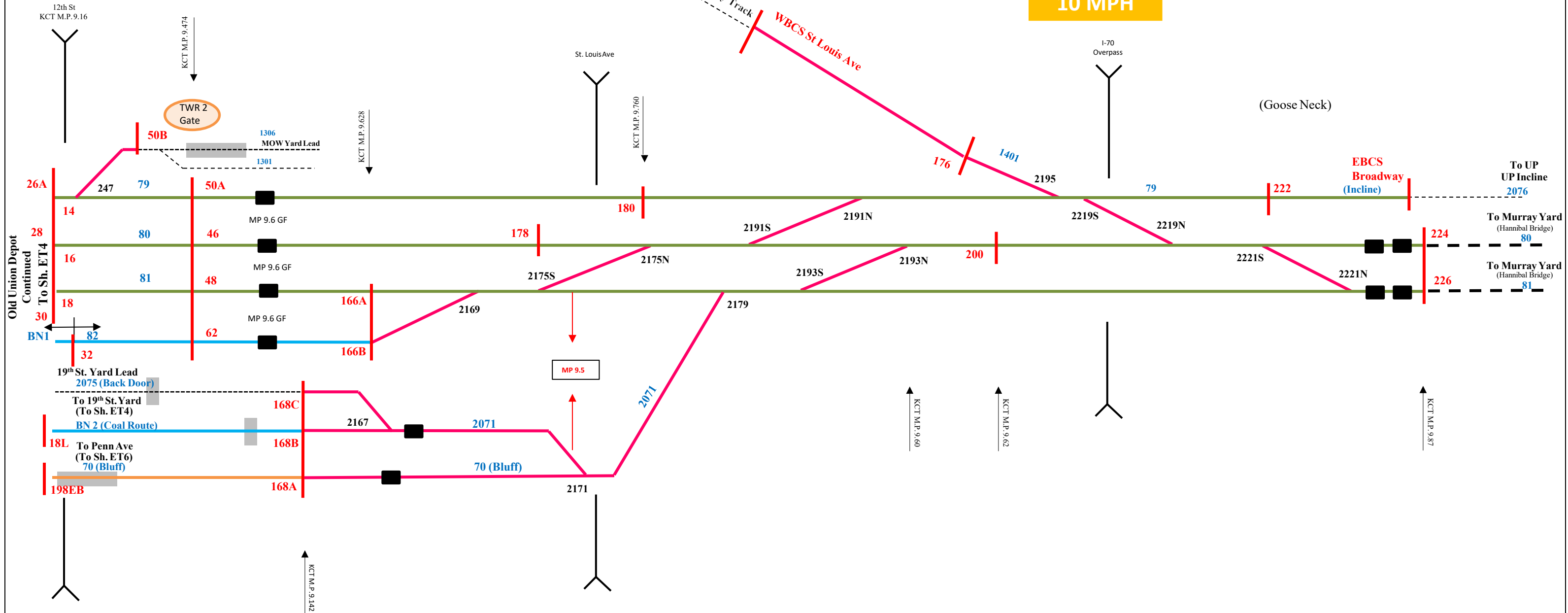
Legend

25 MPH

20 MPH

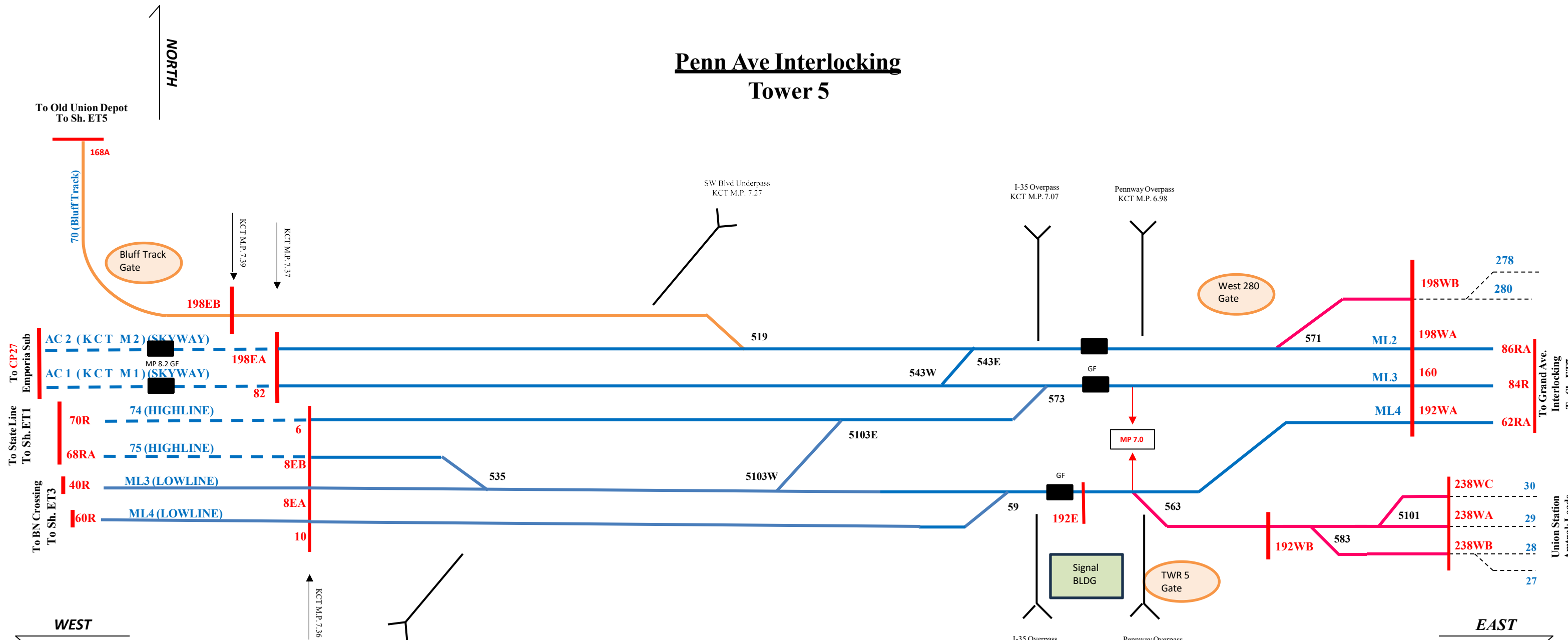
15 MPH

10 MPH



Penn Ave Interlocking Tower 5

NORTH

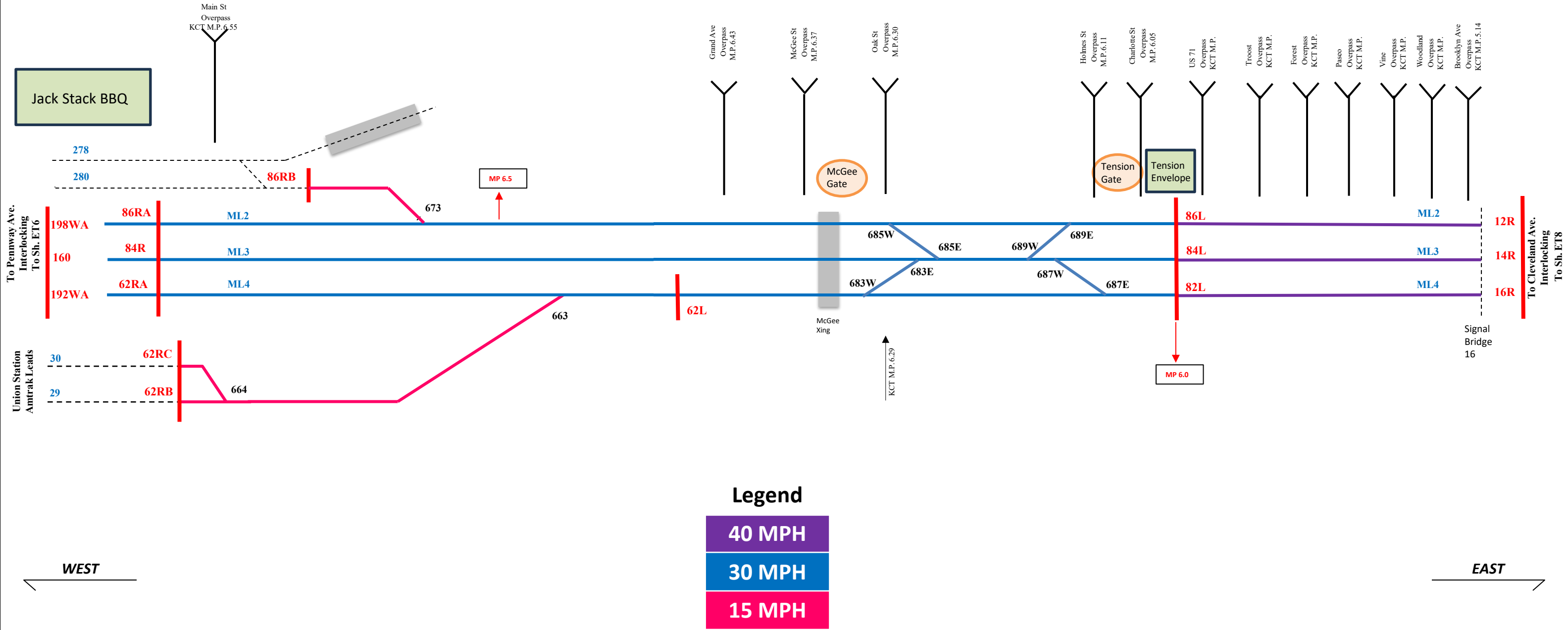


Legend

30 MPH
15 MPH
10 MPH

Grand Ave Interlocking Tower 6

Signal Bridge 16



Jack Stack BBQ

To Pennway Ave.
Interlocking
To Sh. ET6

Union Station
Amtrak Leads

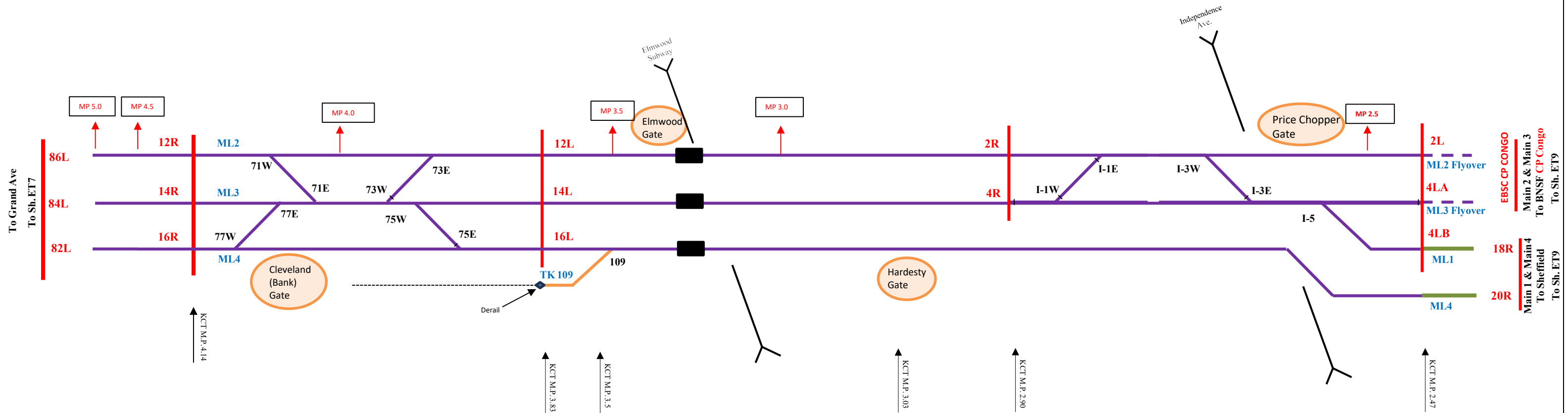
To Cleveland Ave.
Interlocking
To Sh. ET8

Legend

- 40 MPH
- 30 MPH
- 15 MPH

Cleveland Ave Interlocking

Independence Ave Interlocking



Legend

40 MPH
25 MPH
10 MPH

WEST

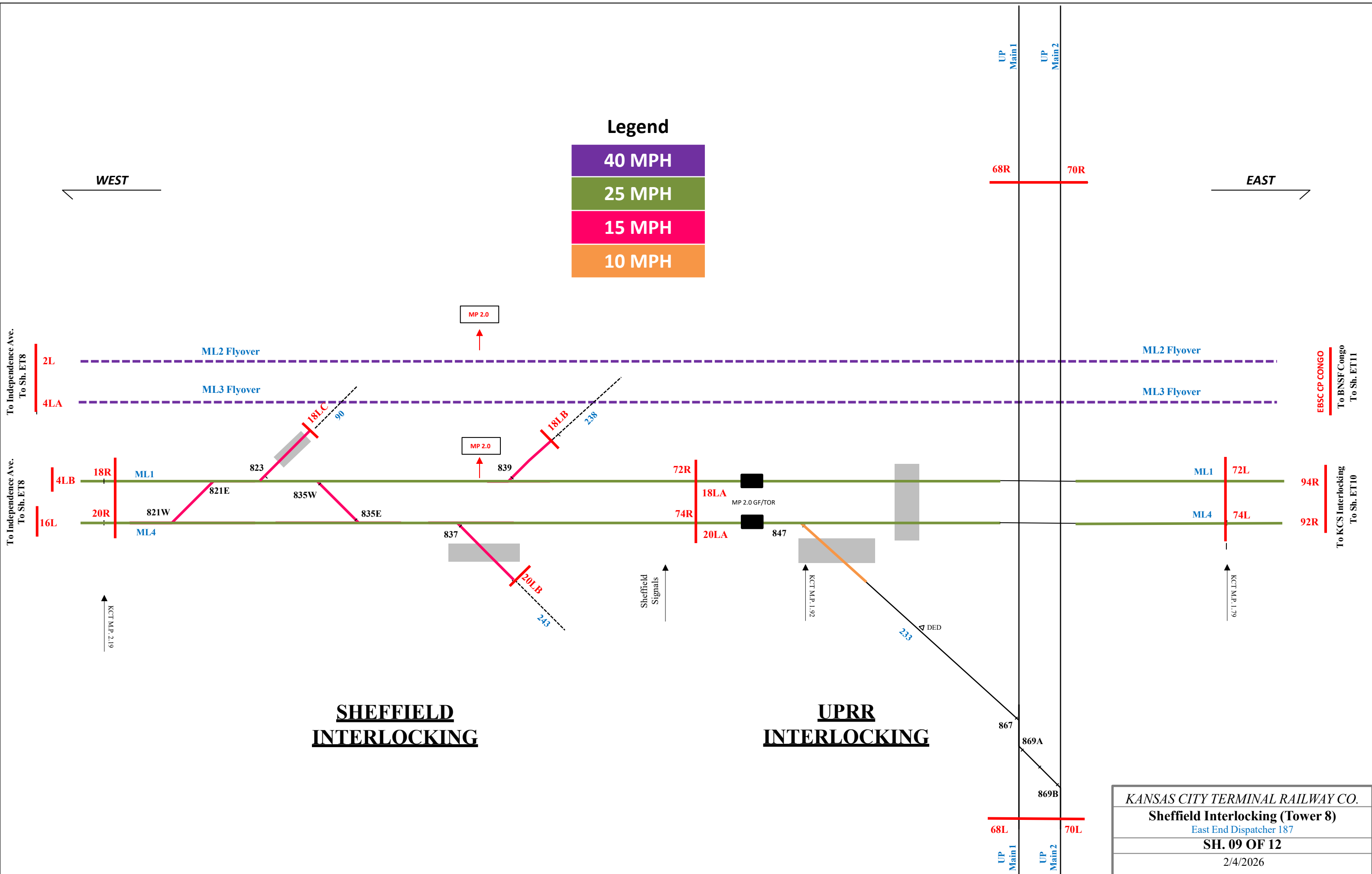
EAST

Legend

40 MPH
25 MPH
15 MPH
10 MPH

WEST

EAST



SHEFFIELD INTERLOCKING

UPRR INTERLOCKING

KANSAS CITY TERMINAL RAILWAY CO.
Sheffield Interlocking (Tower 8)
East End Dispatcher 187
SH. 09 OF 12
2/4/2026

WEST

EAST

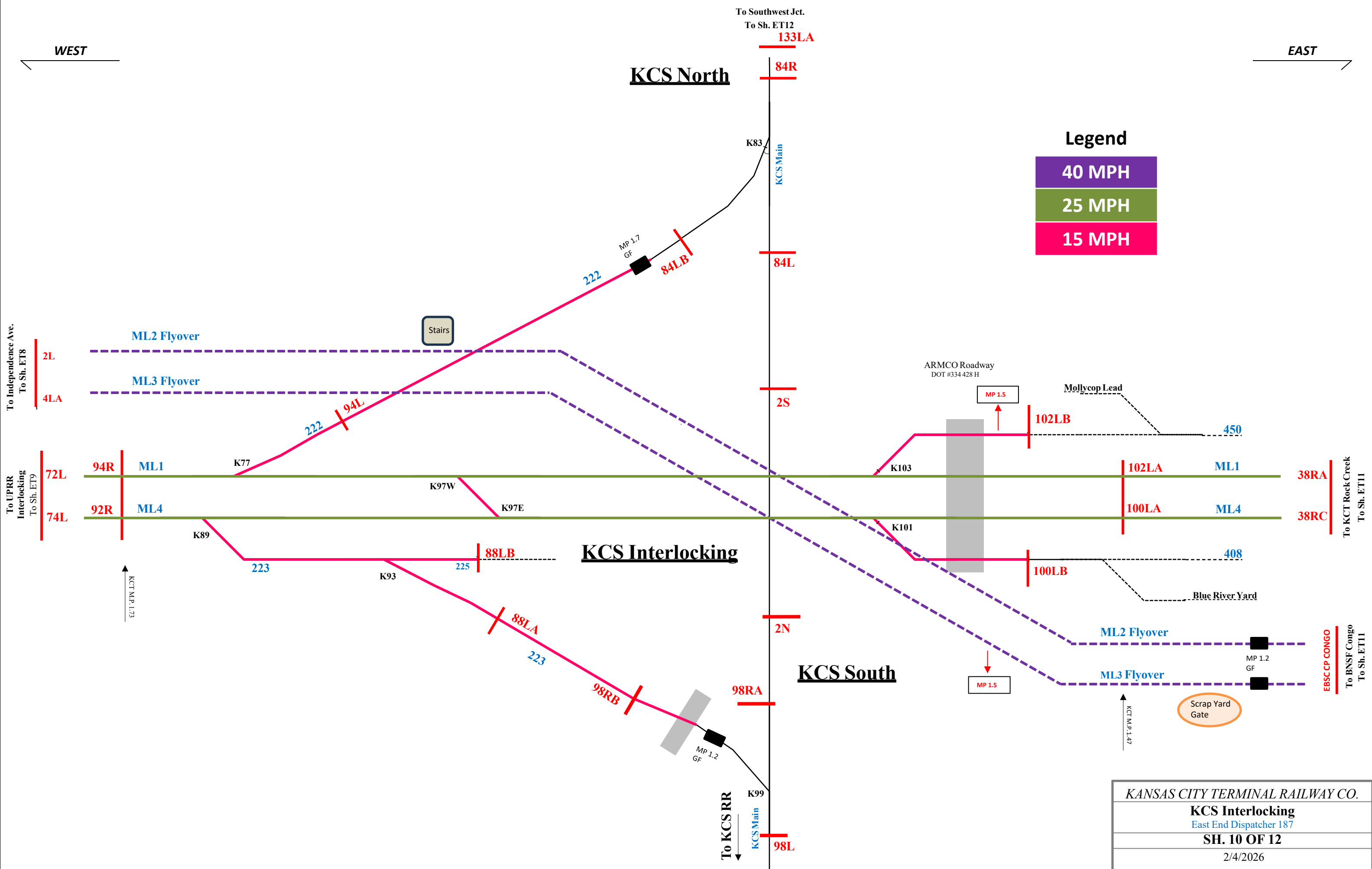
KCS North

Legend

40 MPH

25 MPH

15 MPH



To Independence Ave.
To Sh. ET8

To UPRR
Interlocking
To Sh. ET9

To KCT Rock Creek
To Sh. ET11

To BNSF Congo
To Sh. ET11

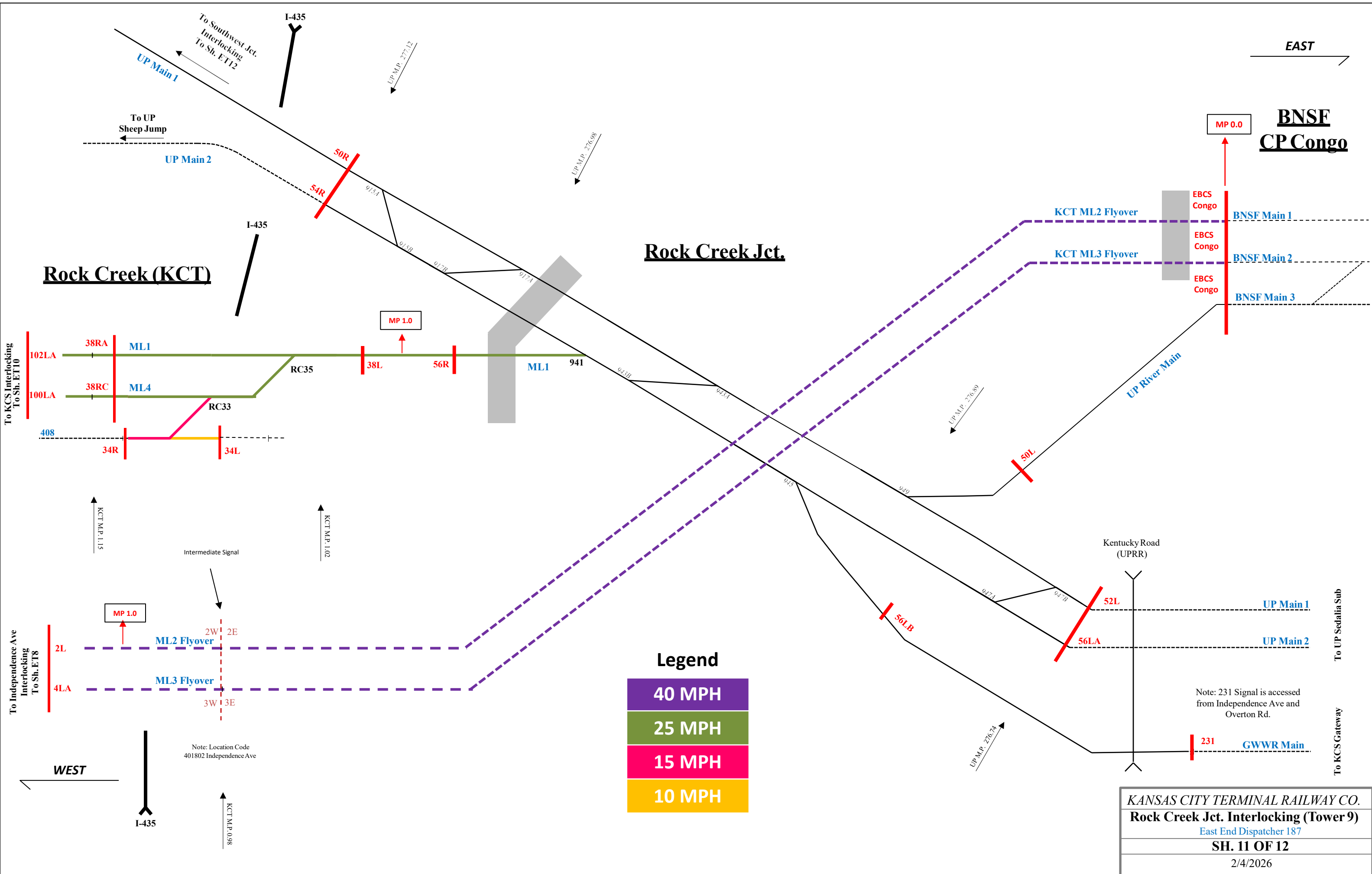
KANSAS CITY TERMINAL RAILWAY CO.	
KCS Interlocking	
East End Dispatcher 187	
SH. 10 OF 12	
2/4/2026	

EAST

**BNSF
CP Congo**

Rock Creek Jct.

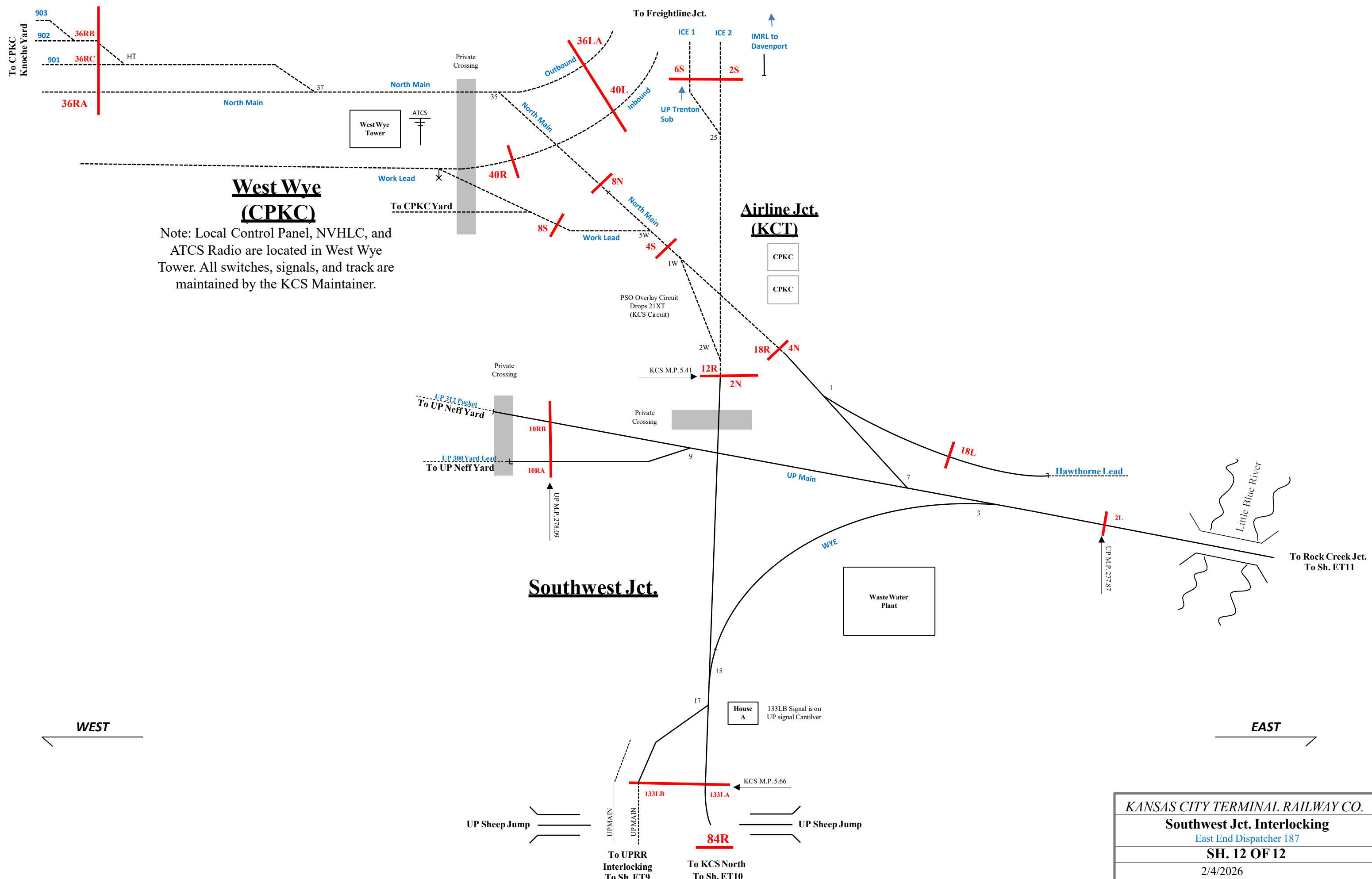
Rock Creek (KCT)



Legend

- 40 MPH
- 25 MPH
- 15 MPH
- 10 MPH

KANSAS CITY TERMINAL RAILWAY CO.
Rock Creek Jct. Interlocking (Tower 9)
 East End Dispatcher 187
SH. 11 OF 12
 2/4/2026



West Wye (CPKC)
 Note: Local Control Panel, NVHLC, and ATCS Radio are located in West Wye Tower. All switches, signals, and track are maintained by the KCS Maintainer.

Airline Jct. (KCT)
 CPKC
 CPKC

Southwest Jct.

KANSAS CITY TERMINAL RAILWAY CO.
Southwest Jct. Interlocking
East End Dispatcher 187
SH. 12 OF 12
2/4/2026